

# Measure Insights User Training

Rachel Buckley  
Jordan Tobey



**E Source**

Web conference

# Your trainers



**Rachel Reiss Buckley**

Senior Director, Customer Energy Solutions,  
E Source

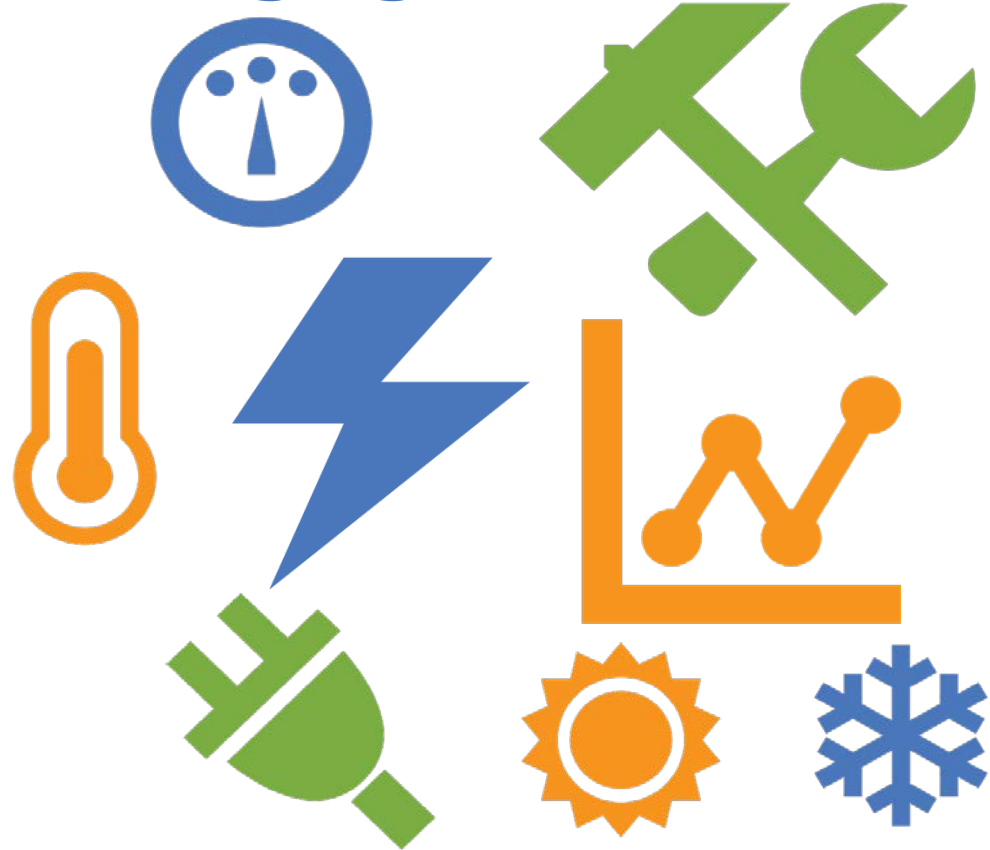


**Jordan Tobey**

Manager, Data Products, E Source

# Measure Insights training agenda

- Introductions
- Measure Insights overview
- How to use TRM Values
- Your use cases
- Q&A







# DSM tools to make your life easier

**Measure Insights** gives us program input data

**DSMdat** provides us with who's doing what

**DSM Insights** tells us how utilities are actually performing

**DSM Evaluation Library** offers the story behind program performance

	 MEASURE INSIGHTS	 DSMdat	 DSM INSIGHTS	 DSM EVALUATION LIBRARY
Intent	Program inputs	Program profiles	Program and portfolio results	"Why" behind results
Measure attributes	✓			
Baseline assumptions	✓			
Incentives		✓		
Measures		✓		
Results			✓	
Spending			✓	
Source	Technical reference manuals	Utility websites	Filings	Impact and process evaluations

# How the tools fit together for portfolio development

How much savings are they planning for each measure to get to the program estimates?

- How well does that program perform?
- How much are they planning to spend and to save with that program?



- Who else already has a program with that measure?
- What incentives do they provide for the measure?

- Why did the program design change course?
- Why did the program perform the way it did?

# Do you need to know ...



... the expected useful life for low-flow showerheads?

... the incremental cost for variable-speed motors?



... the annual energy savings for LED lamps?

...the annual hours of operation for chillers?



Compiles  
**TRM data**  
into a  
**structured online database**  
of measure-specific assumptions  
and inputs to base  
DSM program calculations on

# Where technical reference manuals (TRMs) fit in the DSM cycle





# The state of TRMs



30 publicly available TRMs  
*(Not representative of 30 states)*



Some are regional

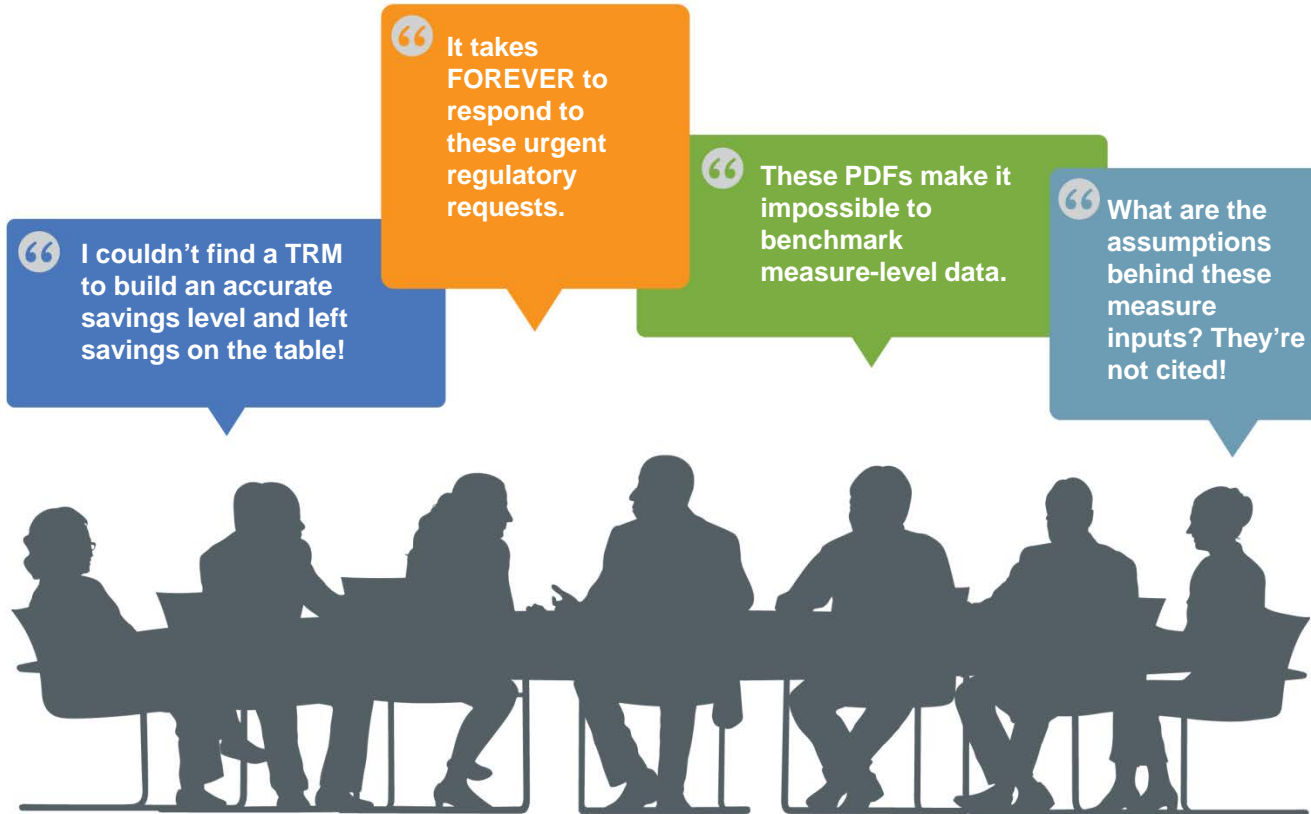


Some states have multiple, by sector



None are easy to find

# Oft-cited challenges of using TRMs



# Measure Insights coverage



32

states and  
provinces



251

unique  
technologies



247

value types



108,037

measure-specific  
data points

# Measure Insights' key elements

Focus on **VALUES** and **SOURCES** (*not* calculations)

VALUE types



Measure life



Incremental cost



Kilowatt-hour savings



Operating hours

Each VALUE has

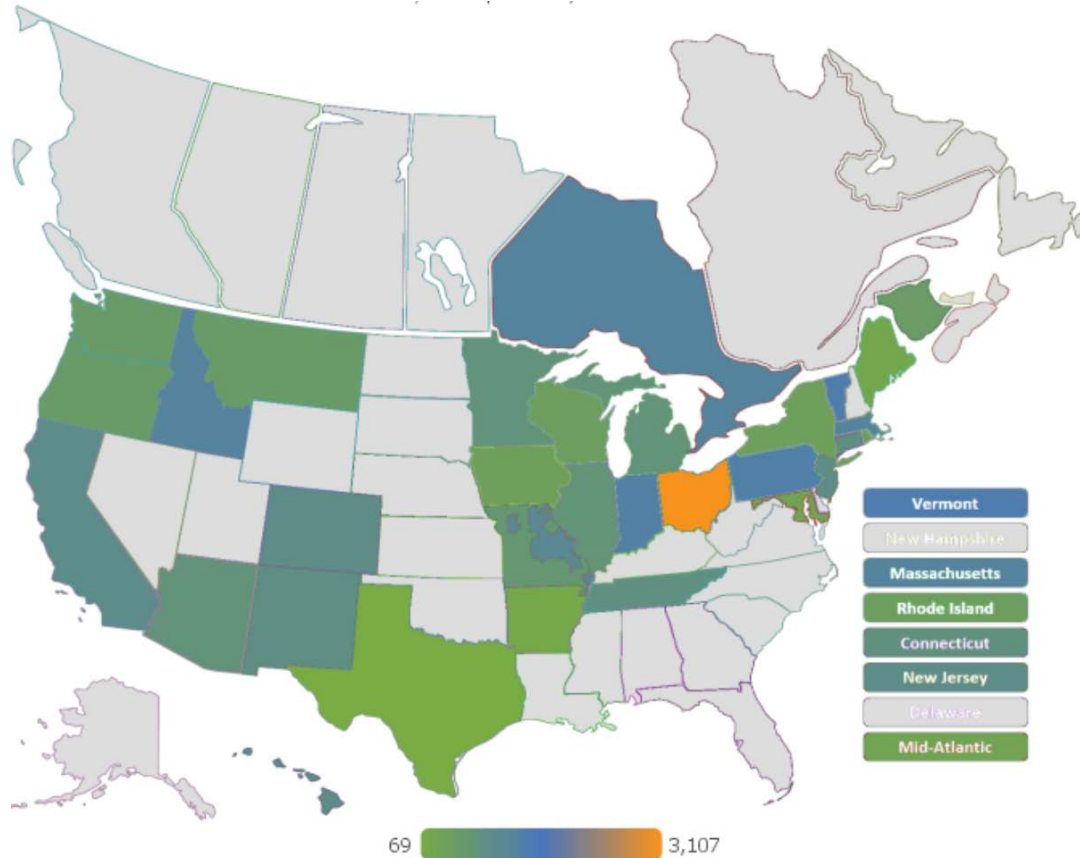


Unit of measure



Comparison type

# All available TRMs



# How we keep it updated

1

The administrator publishes a new TRM or an update to an existing TRM



2

Insights team indexes the TRM



3

Available in  
Measure Insights  
within a month



# Measure Insights dashboards



## TRM Explorer

See a list of available TRMs and explore measures by state/region



## TRM Measure Coverage

View measures across jurisdictions to determine how common it is



## TRM Values

Look across all available TRMs for actual values, with charts, for specific measures

# TRM Explorer

Navigate through one TRM at a time

Local measure names tied to E Source technology taxonomy

View current and expected TRM filing dates

Dockets - Documents

Explorer

Performance

Cycle Tracker

Program B/C Ratios

EM&V

Budget Detail

Category Trends

Sector Trends

TRM Explorer

Current and Expected TRM Filing Dates

Jurisdiction	TRM Version	Territory Type	Format	Days Since Last Published	Current TRM Date	# Local Measures	Expected TRM Filing Date
Texas	TX - V6.0	Statewide	PDF	69	Nov 30 2018	67	Nov 30 2019
Arkansas	AR - V8.0	Statewide	PDF	156	Sep 4 2018	105	Aug 31 2019
Maine	ME - 2018	Statewide	PDF	221	Jul 1 2018	116	Jul 1 2019
Mid-Atlantic	MID-ATL - V8.0	Regional	PDF	282	May 1 2018	100	May 1 2019
Iowa	IA - V2.0	Statewide	PDF	402	Jan 1 2018	137	Sep 30 2019
New York	NY - V5.2	Statewide	PDF	402	Jan 1 2018	85	Aug 1 2019



# TRM Measure Coverage

View measures across jurisdictions to determine

Most common (benchmarking)

Least popular (new opportunities)

TRM Technology Coverage Detail																													+				
Building & Performance				C&I Equipment				Generation, Delivery & Reliability								HVAC & Refrigeration				Lighting				Mot									
# Local Measures				Jurisdiction																													
TechnologyMeasureHierarchy				AM	AR	AZ	CA	CO	CT	HI	IA	ID	IL	IN	MA	MC	ME	MI	MN	MO	NB	NJ	NM	NO	NY	OH	ON	P					
.....Adjustments				1																													
.....Anti-Sweat Heater Controls				1																1				1									
.....Boiler Tune Up				1		5		2		3		2		5		1		1															
.....Central Air Conditioner				1		1		1		1		1		2		2		1		2		1		1		1		1		2		4	
.....Computer Room Air Conditioner (CRAC)				3																1													
.....Ductless Mini-Split Heat Pump				1		3		1		1		1		1		2		5		2		1		1		1							

# TRM Values

View measure data values across jurisdictions

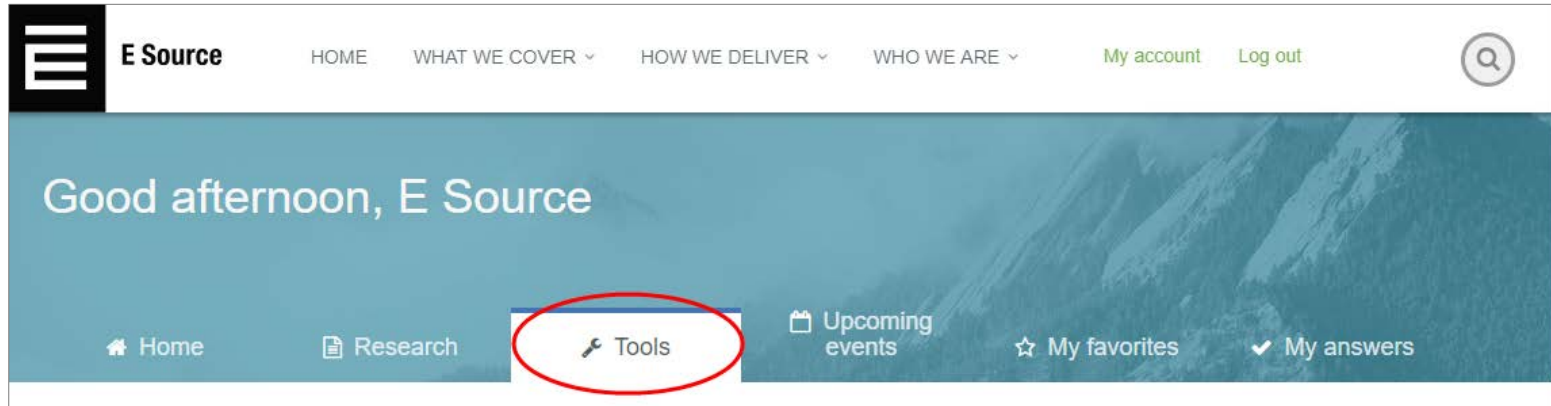
Benchmark the assumptions from your TRM

Find measure values for measures not in your TRM

ockets - Documents Explorer Performance Cycle Tracker Program B/C Ratios EM&V Budget Detail Category Trends Sector Trends TRM Explorer TRM Values										
Limit Data View Analysis View Data										
All Value Details - Click 'view source' where Value is not displayed - Hover over Value Description for more info										
Jurisdiction	TRM Version	Sector Facility	Technology Type	Measure Name	Savings Fuel Type	Value Type	Unit of Measure	Value	Value Source Page	Value Description
Arkansas	AR - V5.0	Residential	Smart Thermostat			Effective Useful Life (EUL)	Years	11	<a href="#">view source</a>	According to DEER 2014, the estimated...
Arkansas	AR - V6.0	Residential	Smart Thermostat			Effective Useful Life (EUL)	Years	11	<a href="#">view source</a>	According to DEER 2014, the estimated...
California	CA - CMUA - 2016	Non-Residential	Smart Thermostat			Effective Useful Life (EUL)	Years	11	<a href="#">view source</a>	EUL = 11 Years
California	CA - CMUA - 2016	Non-Residential	Smart Thermostat			Effective Useful Life (EUL)	Years	11	<a href="#">view source</a>	EUL = 11 Years
California	CA - CMUA - 2016	Residential	Smart Thermostat			Effective Useful Life (EUL)	Years	11	<a href="#">view source</a>	EUL = 11 Years
California	CA - CMUA - 2016	Residential	Smart Thermostat			Effective Useful Life (EUL)	Years	11	<a href="#">view source</a>	EUL = 11 Years

# Accessing Measure Insights

[www.esource.com/measureinsights](http://www.esource.com/measureinsights)



# Measure Insights members



# Existing members say



# It's not just a product



## Access to our team

# Insights tools usage tips

TIPS



Don't use the back button in your browser

*(Use in-tool breadcrumbs and x instead)*



Use Chrome as your browser  
when possible



# Insights tools functionality

TIPS



Blue text = click through to next level of info



= export

Report



Dashboard > RM Version  
Show Filter Values



= in-tool navigation



= switch to table view



= maximize table to enable column sorting



# If the hovers don't work for you

TIPS



Use Firefox

*or*



Turn off your touchscreen in Chrome.

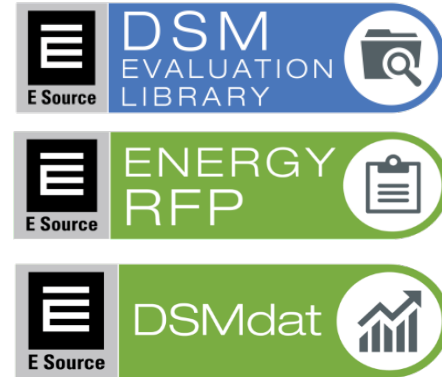
Instructions are here: [www.esource.com/DSMI-About-Usage-Tips/Usage-Tips-DSMI](http://www.esource.com/DSMI-About-Usage-Tips/Usage-Tips-DSMI)

Enter *chrome://flags/#touch-events* into the browser search bar, select Disabled from the drop-down menu, and click Relaunch Now.

# License



Specific number  
of users



Enterprisewide



# Don't miss the monthly newsletter



**Sign up at**  
[www.esource.com/email\\_preferences](http://www.esource.com/email_preferences)

# Training and customer support



Monthly scheduled training sessions;  
custom training upon request



In-tool help menu with recorded training



Quarterly engagement check-in meetings



On-demand technical support



Monthly newsletter with usage tips, tool  
updates, and training dates

# For more information



## Jordan Tobey

Manager, Data Products, E Source

303-345-9196 [jordan\\_tobey@esource.com](mailto:jordan_tobey@esource.com)



## Rachel Reiss Buckley

Senior Director, Customer Energy Solutions, E Source

303-345-9104 [rachel\\_buckley@esource.com](mailto:rachel_buckley@esource.com)